



NCASSTM
NATIONWIDE
CATERERS
ASSOCIATION

Gas Safety Week

On and Off Procedures – Gazebos, Tents or Marquees

www.ncass.org.uk



Open and close procedure

- Appliances are secure and are a safe distance from combustibles.
- Cylinders sited safely and securely following the safety checklist.
- Gas supply line connected to the appliances and ready to be connected to the cylinders.

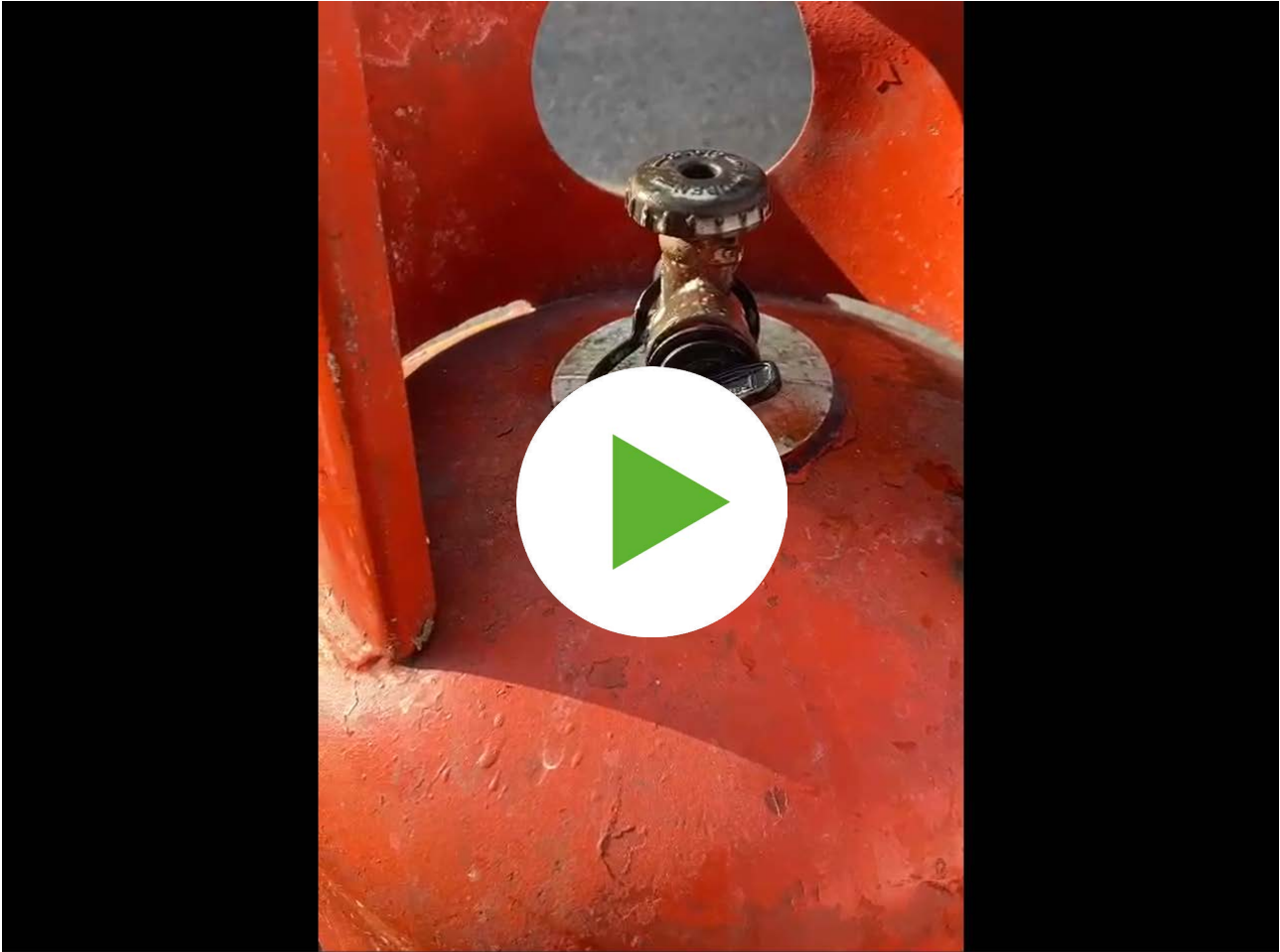
Connecting the gas

1. Make sure the cylinder valves are in an off position.
2. Remove plastic bung from the cylinder nozzle opening.
3. Insert regulator or pigtail fitting (POL) to nozzle opening and screw “finger tight”.
4. Using the Propane Spanner, tighten the POL nut (DO NOT USE BRUTE FORCE).
5. Double check all gas lever valves or cocks are in an off position.
6. Apply a good amount Leak Detection Fluid to ALL visible joints on the entire installation including POL nut to cylinder valve, any gas connection, and the connection to appliances.
7. Whilst observing the POL to cylinder connection, gently open the valve and make sure the connection is gas tight - bubbles will activate if a leak is apparent (they will dissipate if gas tight). If bubbles form, retighten the connection using a little more force and apply more LDF and repeat last step. Ensure there are no bubbles before leaving the cylinder valve in an open position, remember BUBBLES MEANS TROUBLES.
8. Once it is confirmed there are no bubbles, open the valve fully and turn back a half turn (to prevent locking in an open position).
9. Once each section (quarter turn acting valve to isolation valves, isolation valves to appliances etc.) is checked and free from forming bubbles, it is safe to proceed.
10. Clean off LDF with clean water and a cloth/blue roll.

Disconnecting the gas

1. Leave the appliance at the end of the line in an on position (if lit DO NOT leave unattended).
2. Close down the cylinder(s) and ensure they are closed tight.
3. Wait until the appliance extinguishes.
4. It is safe to disconnect the gas supply to the cylinder(s).
5. Re-insert cylinder(s) bung.

6. Close all isolation valves in readiness for the opening procedure next time.
7. Disconnect the gas supply pipe system.
8. Ensure the appliance(s) are cool to touch before handling them.
9. Allow any oil/fat to cool before decanting into the transport vessel.



Contact Us

Call us: **0300 124 6866**

Email us: **info@ncass.org.uk**.

    @ncass_uk

www.ncass.org.uk